

ESTADÍSTICAS NACIONALES DE OFERTA Y DEMANDA DE GAS NATURAL

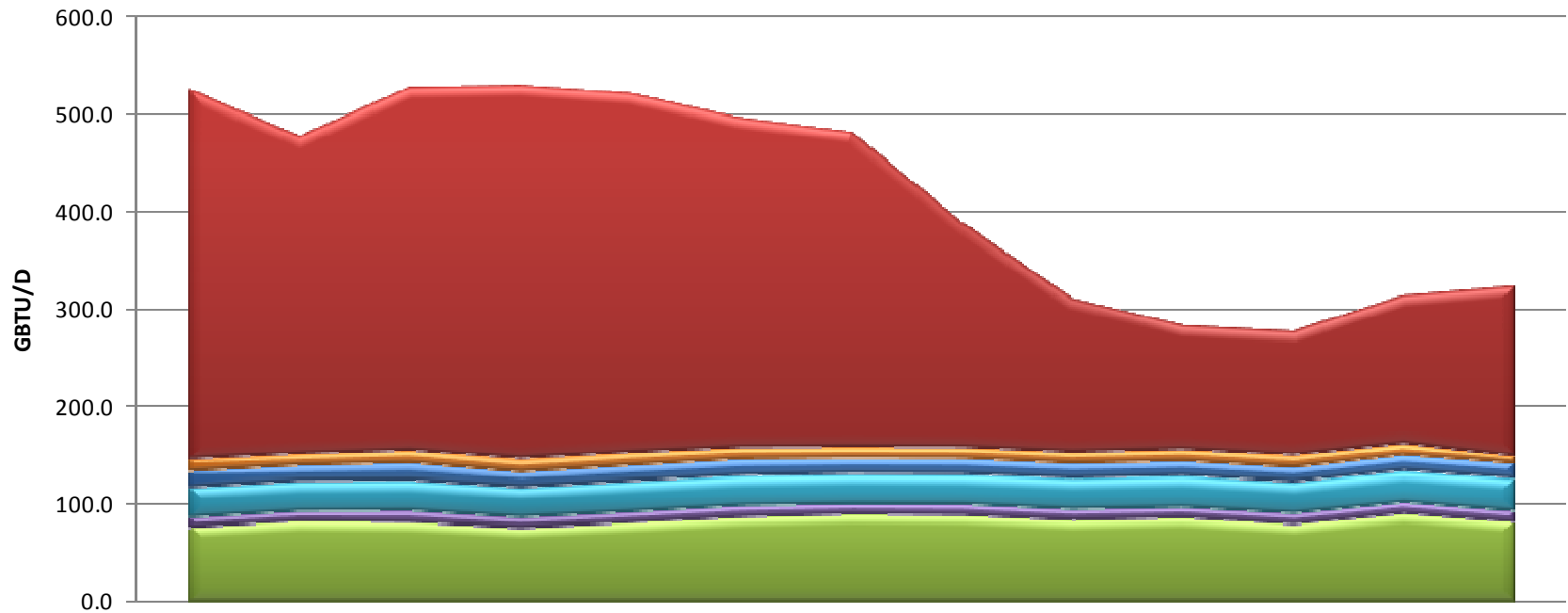
Comité Nacional de Información
Bogotá, diciembre 22 de 2010

Contenido

- Evolución histórica de oferta y demanda

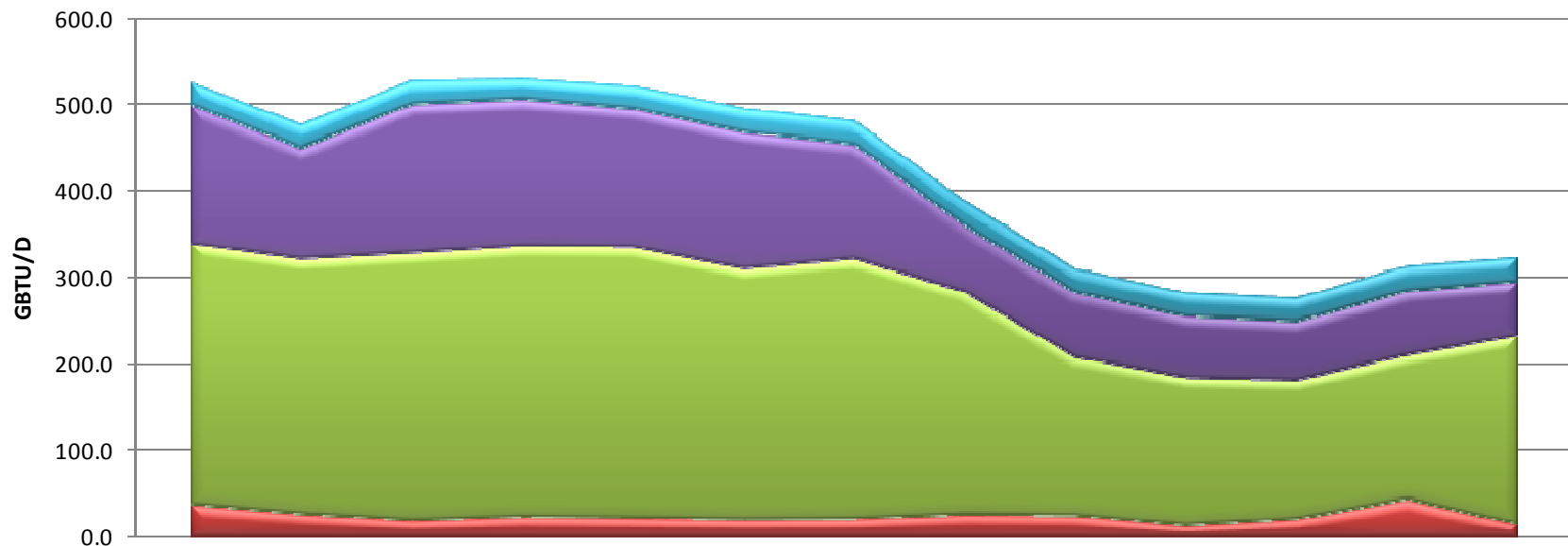
Evolución histórica de oferta y demanda

1.1 CONSUMO DE GAS NATURAL POR SECTORES COSTA ATLÁNTICA



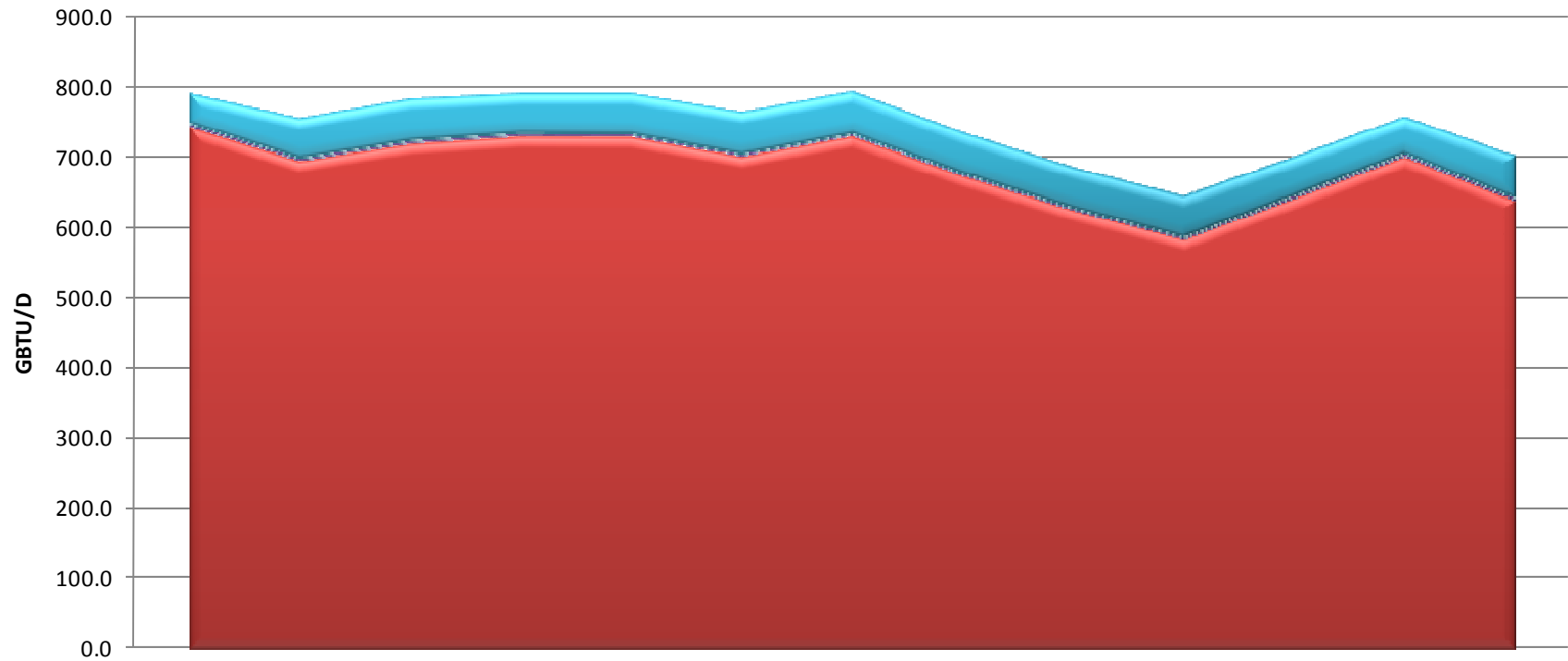
	oct-2009	nov-2009	dic-2009	ene-2010	feb-2010	mar-2010	abr-2010	may-2010	jun-2010	jul-2010	ago-2010	sep-2010	oct-2010
■ Termoeléctrico	380.2	326.3	373.0	383.9	368.9	338.4	323.5	231.0	157.7	127.6	127.6	152.4	175.3
■ Refinería	12.0	11.8	13.0	13.2	13.1	12.3	11.9	11.9	11.7	12.4	12.4	12.4	7.3
■ GNCV	17.3	17.0	18.7	16.6	17.1	17.5	16.5	16.6	16.0	15.8	15.8	16.2	16.1
■ Doméstico	30.4	30.2	30.4	30.3	30.8	30.5	30.9	30.8	31.4	31.8	31.7	32.6	33.0
■ P/químico	10.4	10.8	12.3	11.1	11.4	12.0	11.0	11.4	11.4	11.0	11.6	11.7	11.7
■ Industrial	76.7	82.8	81.7	76.1	81.3	86.8	89.4	88.5	83.8	86.2	79.7	90.2	81.8

1.2 CONSUMO DE GAS NATURAL POR ÁREAS GEOGRÁFICAS, COSTA ATLÁNTICA



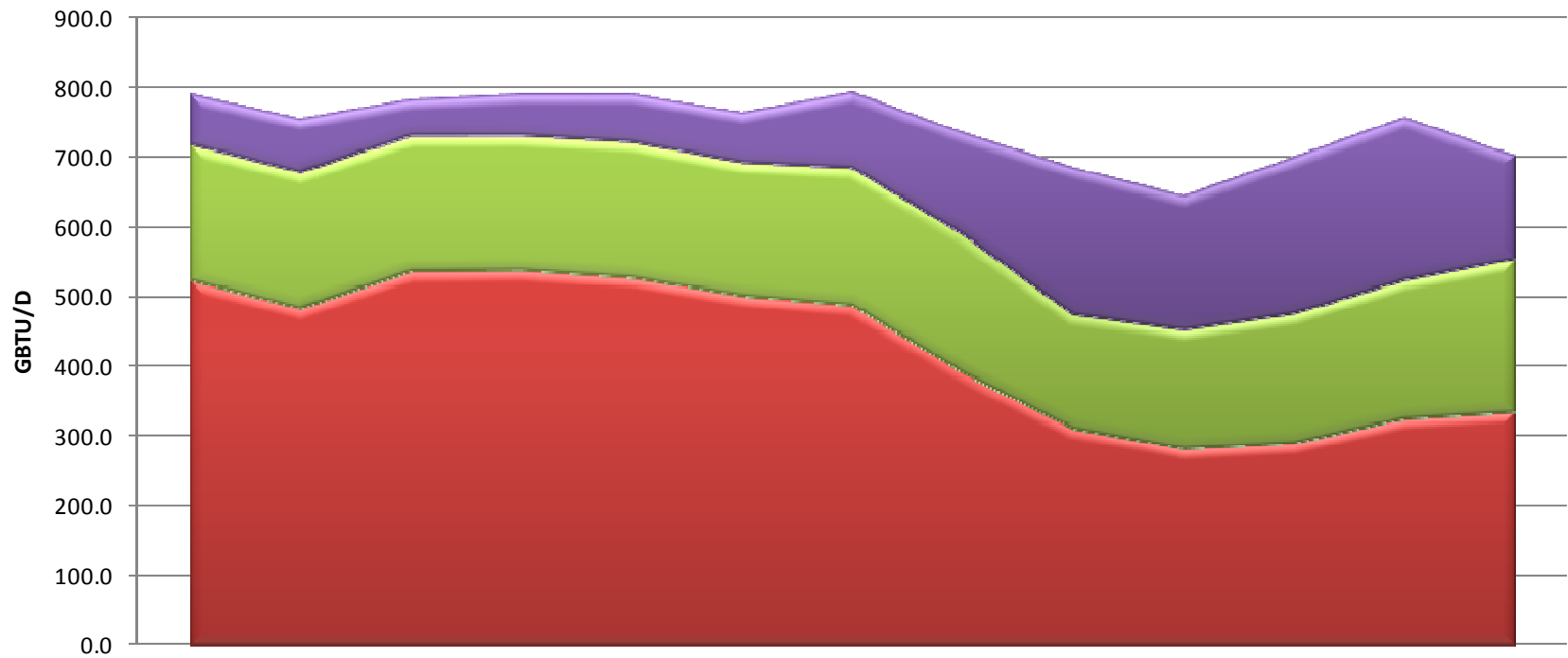
	oct-2009	nov-2009	dic-2009	ene-2010	feb-2010	mar-2010	abr-2010	may-2010	jun-2010	jul-2010	ago-2010	sep-2010	oct-2010
■ Área Córdoba-Sucre	26.1	28.4	28.0	24.2	26.7	28.5	28.4	29.2	27.9	28.1	28.1	29.9	28.9
■ Área Cartagena	161.5	128.5	172.4	170.2	160.4	158.1	132.7	77.5	75.7	71.8	68.7	74.6	63.0
■ Área Barranquilla	301.9	295.2	309.8	313.7	313.9	290.9	301.2	257.5	183.7	171.8	161.4	167.8	218.8
■ Guajira-Magdalena	37.5	26.6	19.0	23.1	21.8	20.0	20.8	26.0	24.7	13.1	20.5	43.2	14.4

1.3 SUMINISTRO DE GAS NATURAL POR CAMPOS, COSTA ATLÁNTICA



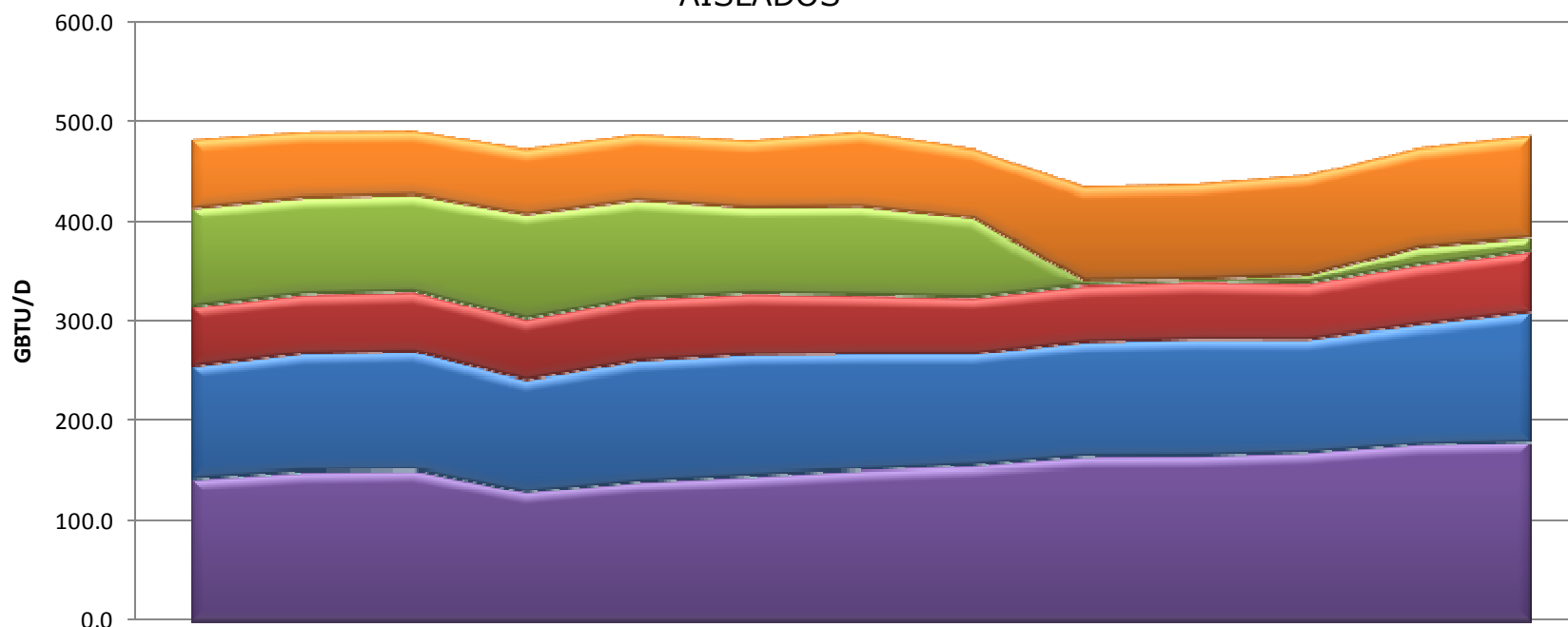
	oct-2009	nov-2009	dic-2009	ene-2010	feb-2010	mar-2010	abr-2010	may-2010	jun-2010	jul-2010	ago-2010	sep-2010	oct-2010
■ La Creciente	42.9	57.2	59.9	56.9	58.4	60.4	60.4	59.0	58.3	59.2	55.4	52.8	60.3
■ Arianna	4.2	3.7	3.6	3.6	2.9	2.9	2.6	2.6	2.6	2.6	3.8	3.8	4.1
■ Güepajé	0.0	0.0	0.0	0.0	0.0	0.0	0.0	0.0	0.0	0.0	0.0	0.0	0.0
■ La Guajira	743.8	695.0	719.7	730.2	729.6	701.4	730.5	674.4	625.4	584.5	642.2	701.2	638.4

1.4 DESTINACIÓN DEL GAS NATURAL PRODUCIDO EN LA COSTA ATLÁNTICA



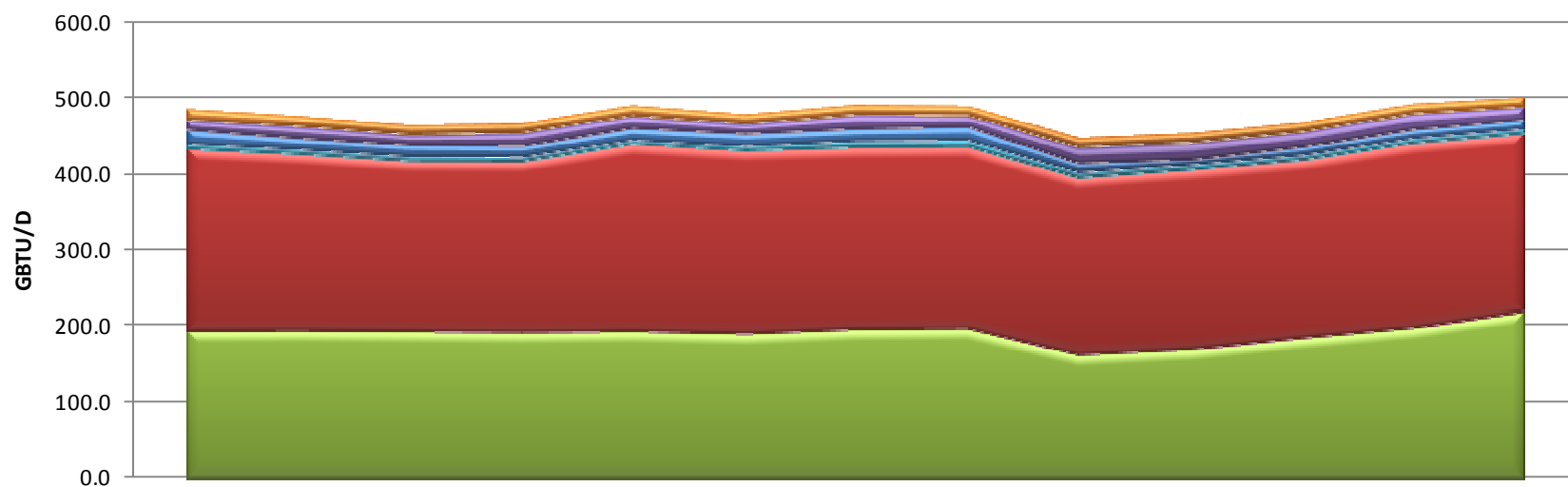
	oct-2009	nov-2009	dic-2009	ene-2010	feb-2010	mar-2010	abr-2010	may-2010	jun-2010	jul-2010	ago-2010	sep-2010	oct-2010
A Venezuela	73.0	77.6	53.4	60.4	69.6	72.5	109.0	146.2	210.5	191.8	224.2	232.9	147.7
Al interior	195.0	195.4	194.4	193.2	194.5	191.5	197.1	198.1	164.3	171.2	186.1	199.0	219.7
A la Costa	523.0	482.8	535.5	537.1	526.8	500.7	487.4	391.6	311.6	283.3	291.1	325.9	335.3

2.1 CONSUMO DE GAS NATURAL POR SECTORES INTERIOR DEL PAIS SIN CAMPOS AISLADOS



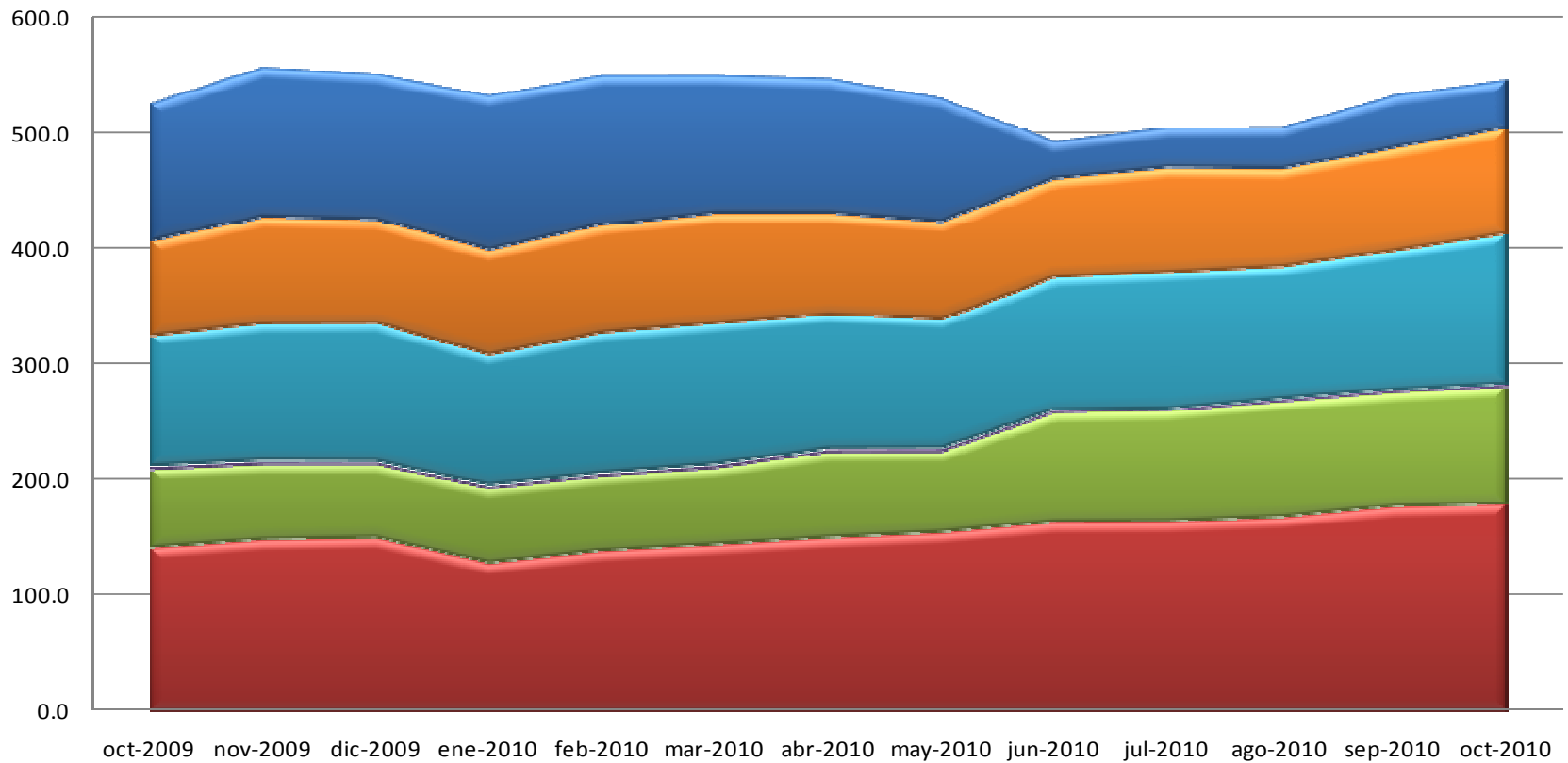
	oct-2009	nov-2009	dic-2009	ene-2010	feb-2010	mar-2010	abr-2010	may-2010	jun-2010	jul-2010	ago-2010	sep-2010	oct-2010
Refinería	68.7	65.7	64.1	65.7	65.6	67.1	74.3	70.1	94.5	95.8	100.9	99.4	101.9
Termoeléctrico	98.5	96.4	96.4	105.2	98.9	86.0	88.8	79.4	5.1	2.7	8.6	18.7	13.7
GNCV	60.1	59.5	60.1	60.3	62.3	61.4	58.9	56.3	56.4	57.1	55.4	59.4	61.6
Doméstico	112.8	118.5	119.5	113.2	121.3	121.8	117.1	112.4	115.8	118.3	114.6	120.4	129.8
P/químico	0.8	1.0	0.6	0.3	0.4	0.9	0.5	0.9	0.7	0.7	0.5	0.5	0.7
Industrial	141.3	148.6	150.2	128.6	138.9	144.2	150.3	154.7	163.3	163.8	167.4	175.9	178.4

2.2 SUMINISTRO DE GAS NATURAL AL INTERIOR POR CAMPOS



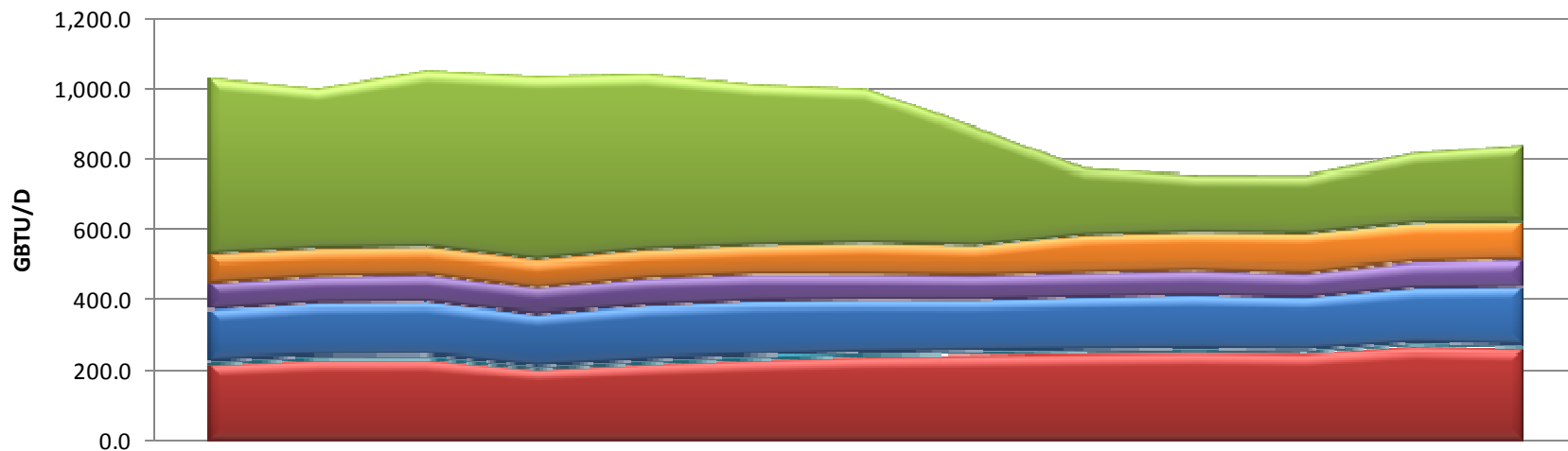
	oct-2009	nov-2009	dic-2009	ene-2010	feb-2010	mar-2010	abr-2010	may-2010	jun-2010	jul-2010	ago-2010	sep-2010	oct-2010
■ Otros, interior	14.3	12.9	12.3	12.0	12.8	12.0	12.3	11.9	12.1	11.9	11.9	12.2	11.9
■ Otros, Magd Medio (1)	12.0	15.3	13.2	17.2	16.0	12.4	18.3	14.5	20.0	21.9	19.4	20.3	16.9
■ Payoa-Provincia	19.5	15.8	16.3	15.6	16.6	17.5	16.8	18.5	14.1	8.2	12.2	12.4	12.1
■ Floreña	6.3	5.6	5.7	5.5	4.9	5.3	8.1	8.1	6.2	6.1	5.8	6.2	6.1
■ Cusiana	237.7	230.6	222.6	223.3	244.4	239.1	237.5	237.5	231.2	234.6	232.4	241.2	232.8
■ De La Guajira	195.0	195.4	194.4	193.2	194.5	191.5	197.1	198.1	164.3	171.2	186.1	199.0	219.7

4.1 Consumo de Gas Natural por Sectores Interior del País



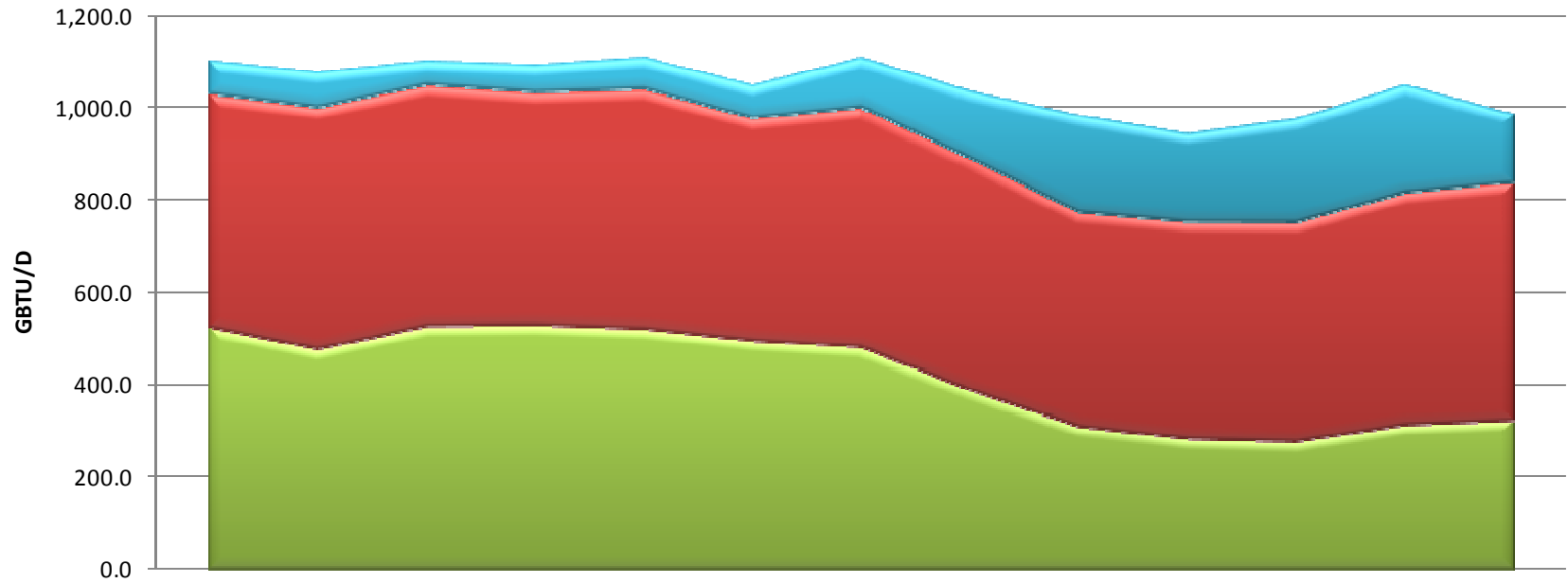
	oct-2009	nov-2009	dic-2009	ene-2010	feb-2010	mar-2010	abr-2010	may-2010	jun-2010	jul-2010	ago-2010	sep-2010	oct-2010
Termoeléctrico	119.1	128.5	125.3	133.7	128.8	118.9	116.0	106.5	32.3	34.6	36.4	46.1	41.6
GNCV	82.1	93.1	90.3	90.3	93.6	95.8	87.6	84.9	85.1	90.4	84.6	88.9	91.5
Doméstico	112.8	118.5	119.5	113.2	121.3	121.8	117.1	112.4	115.8	118.3	114.6	120.4	129.8
P/químico	2.1	2.4	1.9	1.7	1.8	2.3	2.1	2.3	2.1	2.1	1.9	2.1	2.3
Refinería	68.7	65.7	64.1	65.7	65.6	67.1	74.3	70.1	94.5	95.8	100.9	99.4	101.9
Industrial	141.3	148.6	150.2	128.6	138.9	144.2	150.3	154.7	163.4	163.8	167.4	176.4	178.9

5.1 CONSUMO NACIONAL DE GAS NATURAL POR SECTORES



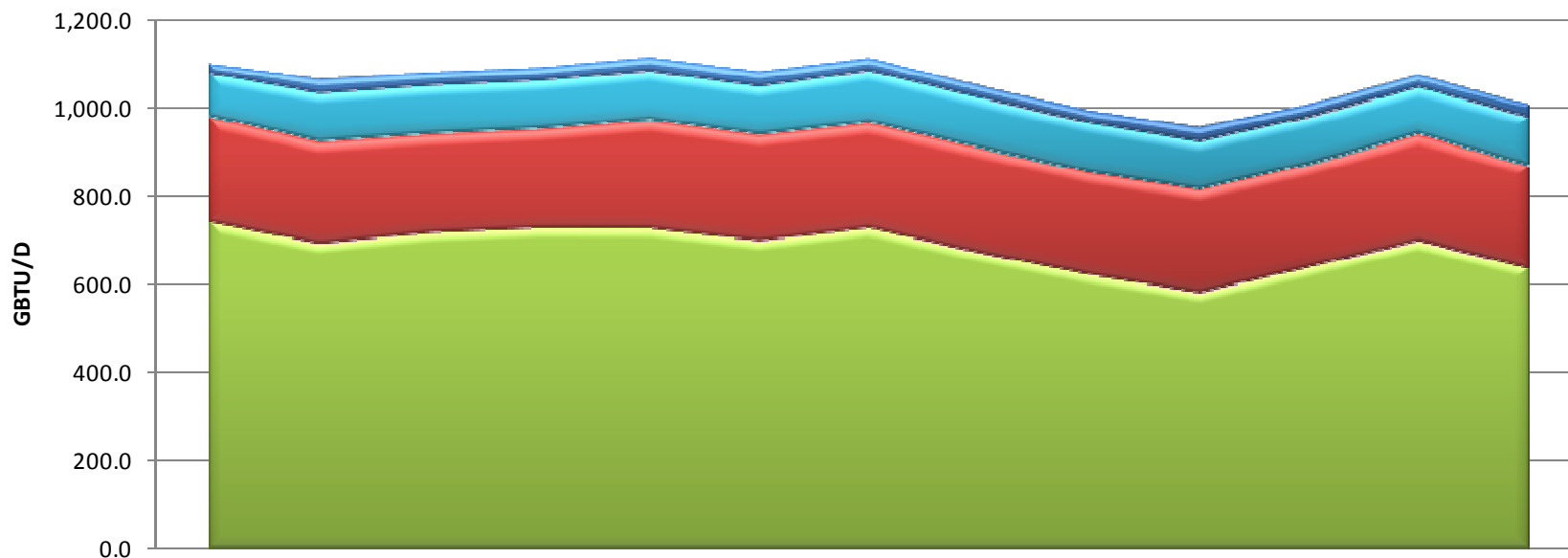
	oct-2009	nov-2009	dic-2009	ene-2010	feb-2010	mar-2010	abr-2010	may-2010	jun-2010	jul-2010	ago-2010	sep-2010	oct-2010
Termoeléctrico	499.3	454.8	498.3	517.6	497.7	457.3	439.5	337.6	190.1	162.2	164.0	198.5	216.9
Refinería	80.6	77.5	77.1	78.9	78.8	79.4	86.1	82.0	106.2	108.2	113.2	111.8	109.2
GNCV	77.3	76.5	78.8	76.9	79.4	78.9	75.3	72.8	72.4	72.9	71.2	75.6	77.7
Doméstico	144.6	150.1	151.3	145.0	153.5	153.8	149.5	144.6	148.7	151.5	147.7	154.5	164.4
P/químico	11.2	11.8	12.8	11.4	11.8	12.9	11.5	12.4	12.1	11.7	12.1	12.2	12.4
Industrial	218.0	231.3	231.9	204.7	220.2	231.0	239.7	243.2	247.1	250.0	247.1	266.7	260.6

5.2 DEMANDA DE GAS NATURAL POR AREA GEOGRAFICA



	oct-2009	nov-2009	dic-2009	ene-2010	feb-2010	mar-2010	abr-2010	may-2010	jun-2010	jul-2010	ago-2010	sep-2010	oct-2010
■ Venezuela	73.0	77.6	53.4	60.4	69.6	72.5	109.0	146.2	210.5	191.8	224.2	232.9	147.7
■ Interior	504.1	523.3	521.0	503.3	518.7	481.4	518.6	502.3	464.6	471.7	476.6	503.8	516.0
■ Costa Atlántica	526.9	478.7	529.1	531.2	522.8	497.4	483.1	390.2	312.0	284.8	278.7	315.5	325.1

5.3 SUMINISTRO DE GAS NATURAL POR CAMPOS



	oct-2009	nov-2009	dic-2009	ene-2010	feb-2010	mar-2010	abr-2010	may-2010	jun-2010	jul-2010	ago-2010	sep-2010	oct-2010
Campos aislados	21.1	32.6	29.3	29.0	30.3	33.4	27.6	27.6	27.6	32.3	28.2	27.8	28.3
Otros campos	99.2	110.5	111.0	110.8	111.7	110.6	118.5	114.6	113.4	109.9	108.5	107.6	111.4
Cusiana	237.7	230.6	222.6	223.3	244.4	239.1	237.5	237.5	231.2	234.6	232.4	241.2	232.8
La Guajira	743.8	695.0	719.7	730.2	729.6	701.4	730.5	674.4	625.4	584.5	642.2	701.2	638.4